



IMA-EUROPE 2024 REAL TIME AND DMP LEARNINGS

Ramon Elul – Nov 2024





Learning from DMP

Job Function	2021	2022
⊖ Bagging operator		
KBL	0.0539%	39.2195%
FMR	0.0992%	15.6584%
Hlubany	0.0003%	0.0000%
Brake	0.3059%	4.4019%

Job Function	2021	2022	2023
⊖ Quarry operator - Wheelloader			
Hohewiese	1.4091%	8.9941%	2.9667%
Pfeul	0.1413%	8.9941%	0.0000%
Meissen	3.1870%	2.6384%	0.2428%

Job Function	2022	2023	2024
⊖ Laboratory			
Mios	1.6131%	12.4500%	0.0000%
⊖ Wet process operator			



Why we increase personal exposure in job functions where technical improvements were successfully implemented in the past ?

safe habits *save lives*



Dust Control Techniques

Laboratory Cabinets



Conveyor Belts

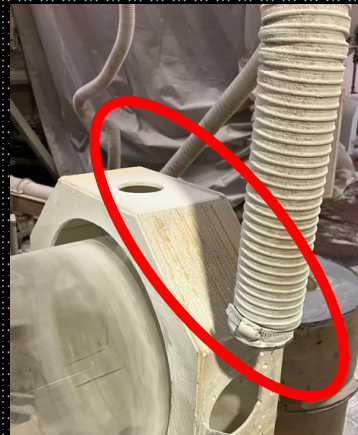
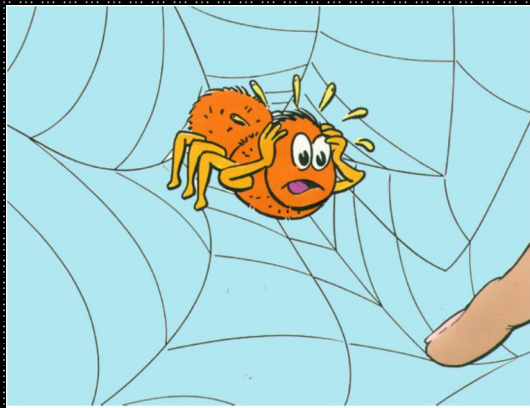


safe habits **save lives**



Dedusting installation

A change affects all parts of system!



Worn-out and near worn-out pieces need to be replaced via a **preventive maintenance program**;

Improve concept simply through a good wear-resistant material piping.

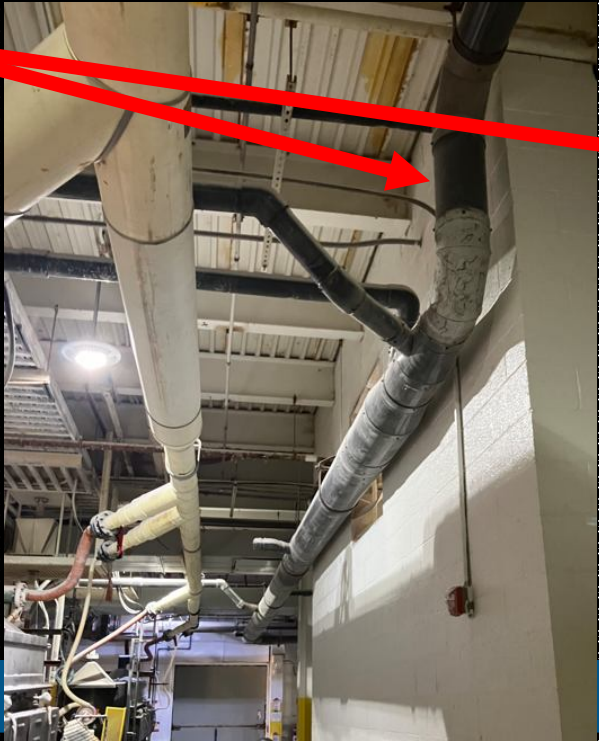
safe habit



Dedusting installation

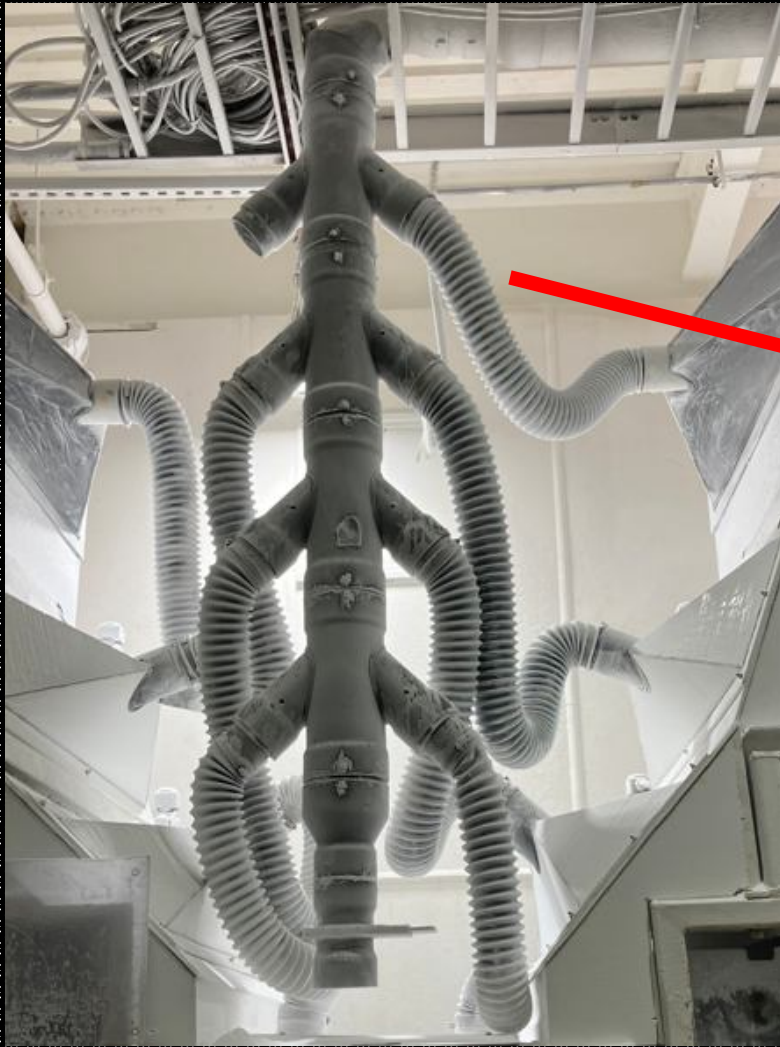
No map for the existing dust/fumes collection system.
No verification of dust/fume filters if working properly

Small filter for dedusting systems with many LEV





Dedusting installation



Flexible Ducts



- Many fittings
- Higher pressure drop

Action:

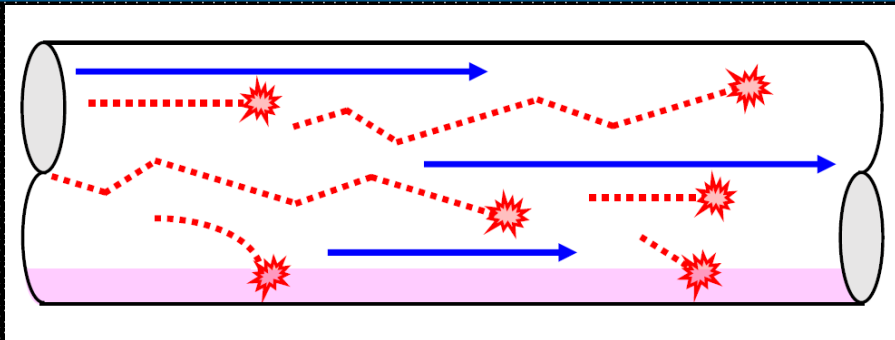
Use as much rigid duct as possible

Use flexible duct only where necessary: Screening

safe habits save lives



Dedusting installation: Conveying Velocity



Insufficient Conveying Velocity can generate blockages and collapse of pipes

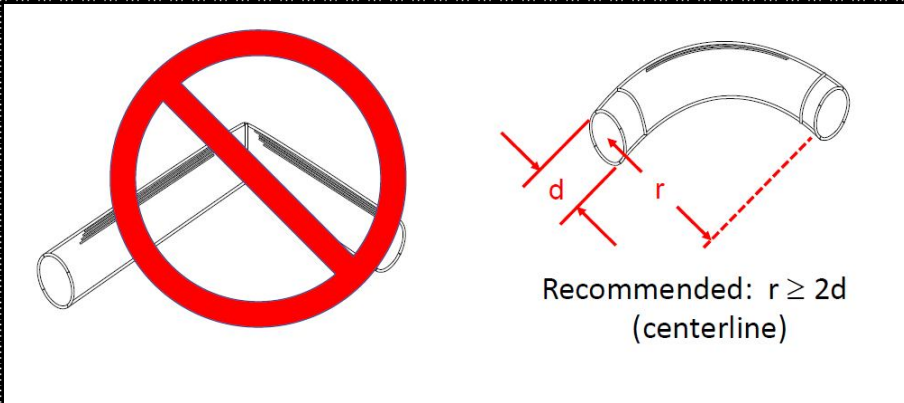


safe habits **save lives**

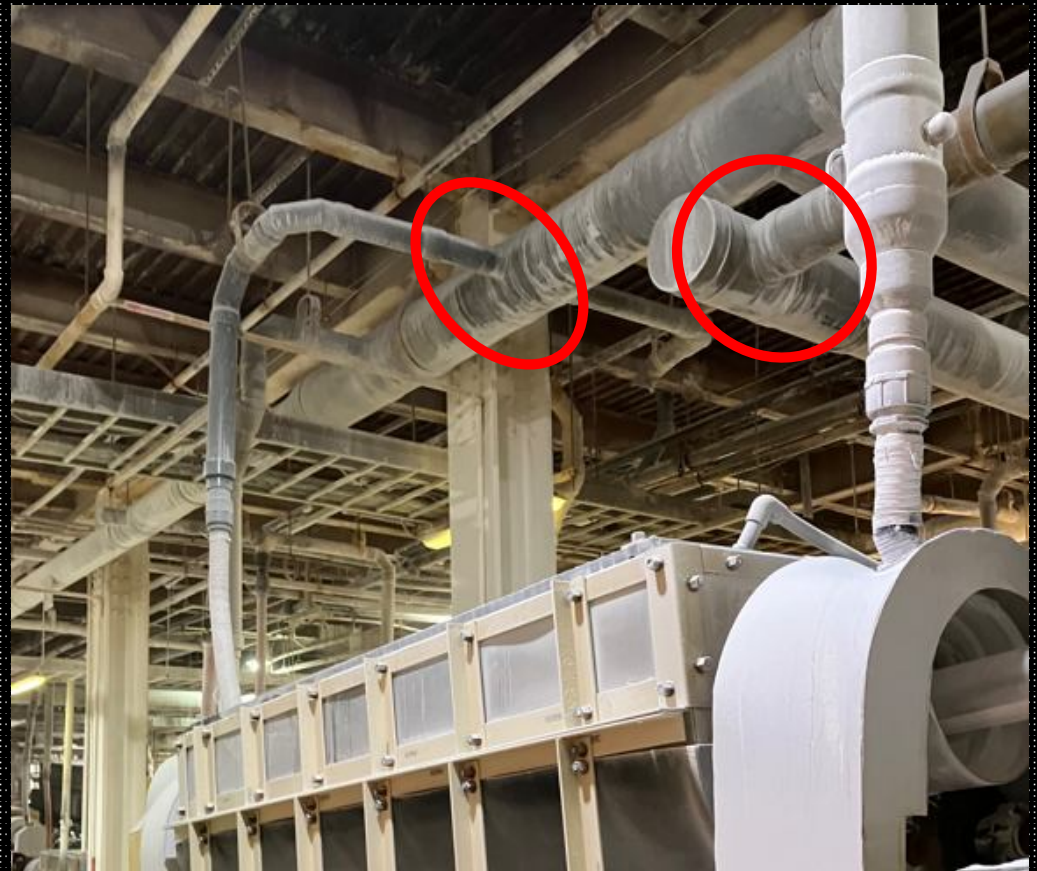
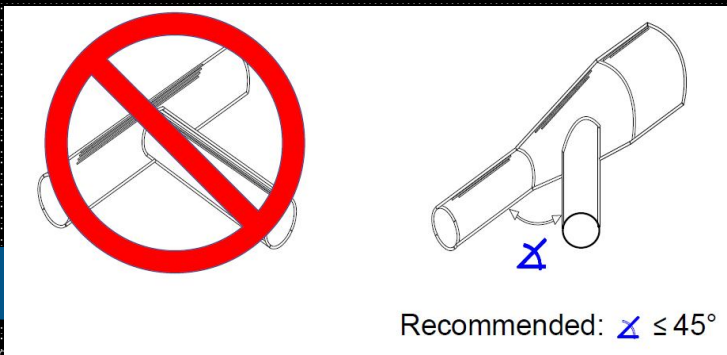


Dedusting installation: Design ducts

Use "Good" Elbow Design



Provide Good Entry Design



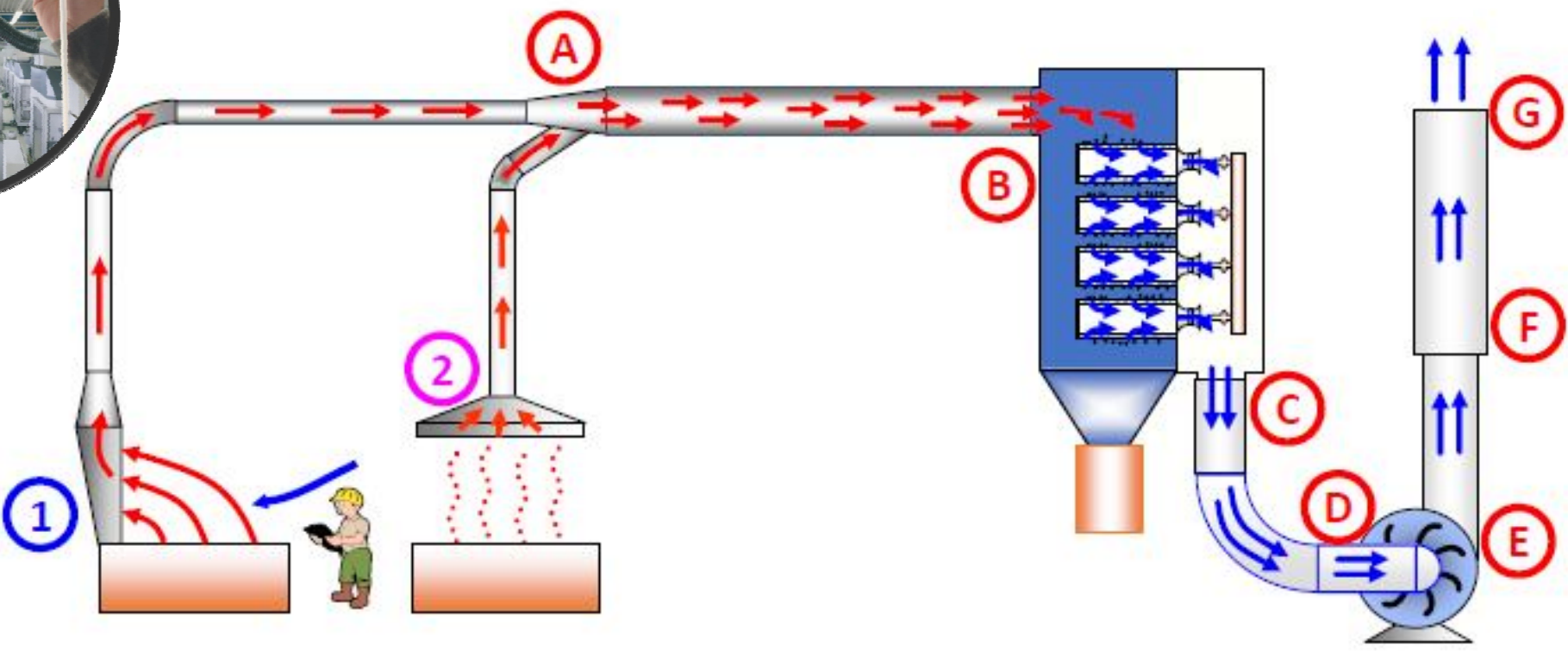
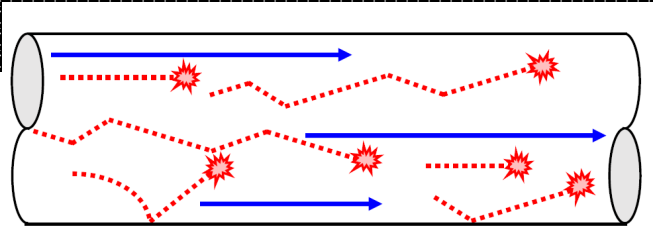
safe habits *save lives*



Dedusting installation: Let's make it simple and balanced



Sufficient Conveying Velocity





Housekeeping



Check the condition of the filter as recommended by the manufacturer and keep the interior of the cabin clean and floors



safe habits *save lives*



Housekeeping



Finish cleaning
with water



Housekeeping
floors easy to
clean



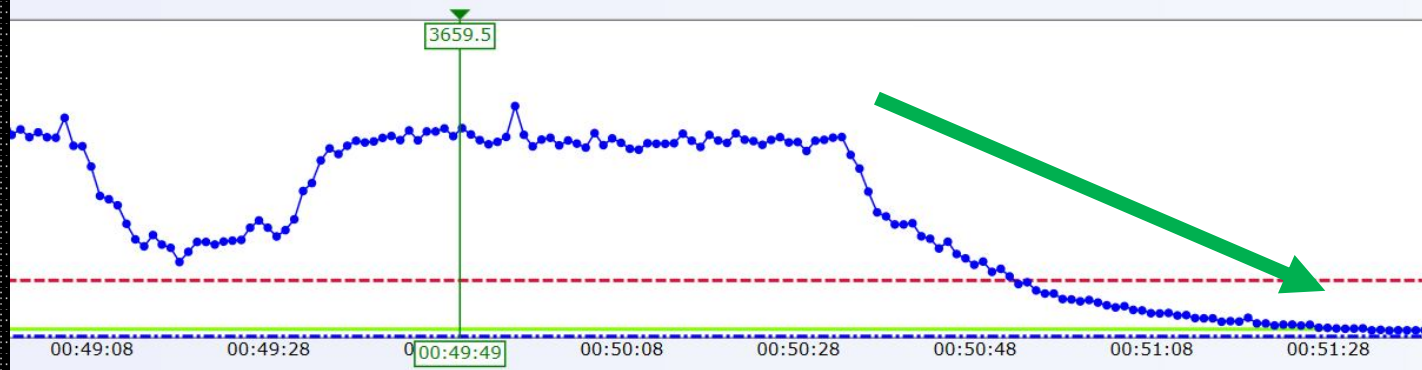
safe habits save lives



Real time monitoring



Filtration of cabin is working well



safe habits *save lives*



Mobile equipment HEPA Filters



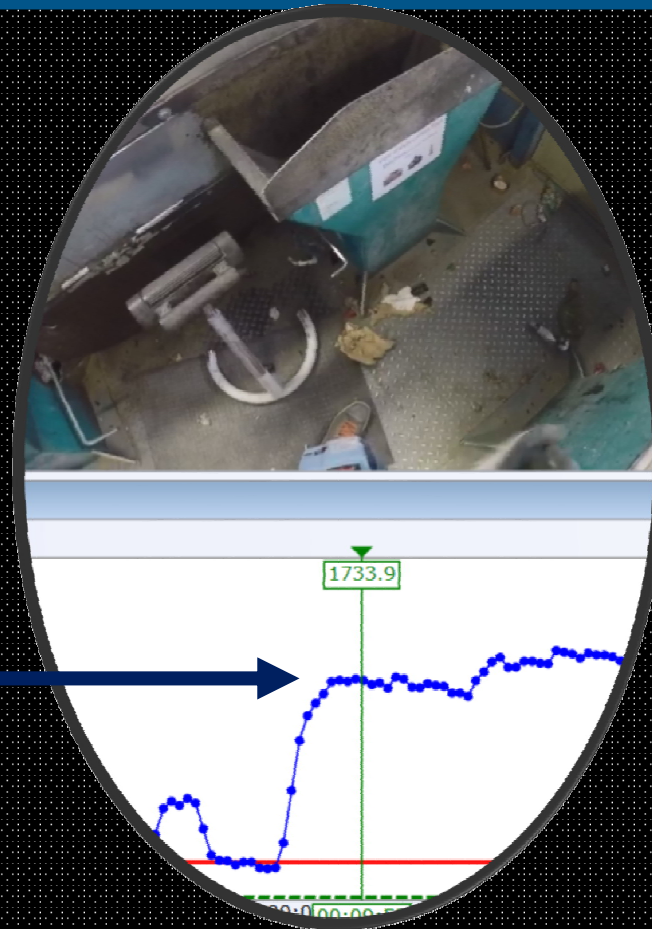
HEPA filters for mobile equipment cabins



safe habits *save lives*



Control rooms

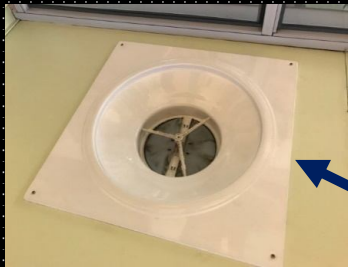


safe habits *save lives*



Control rooms

Outdoor air



Clean air intake



Filters: G4, F6 and HEPA

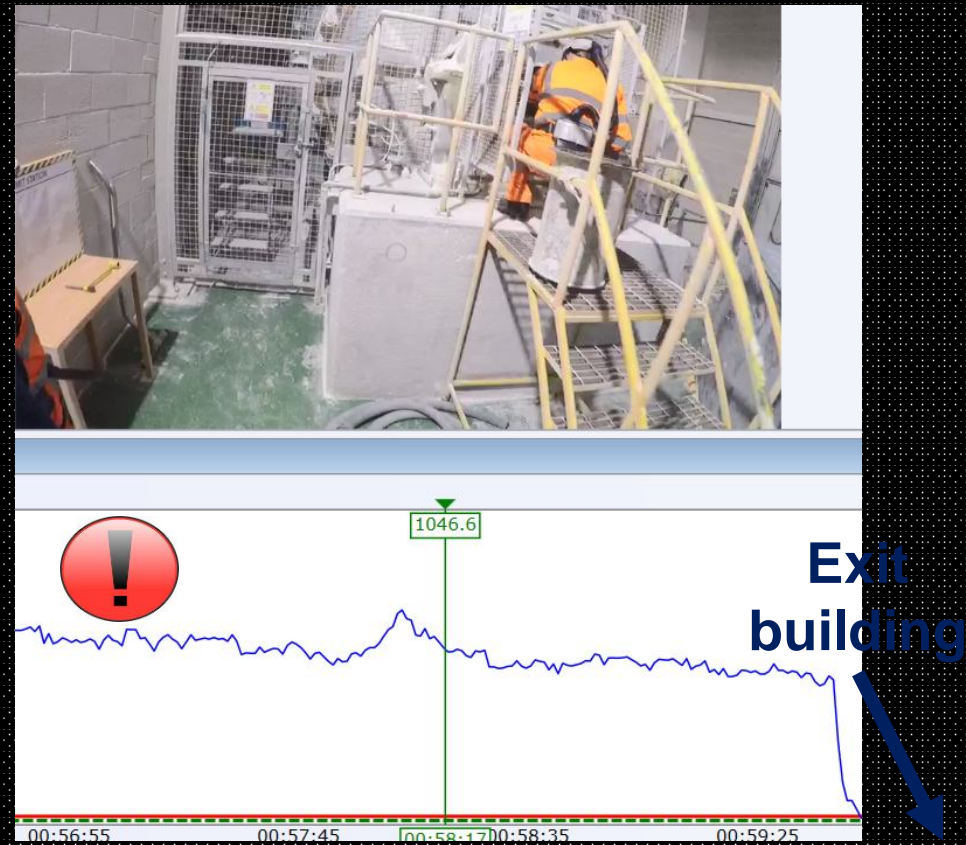
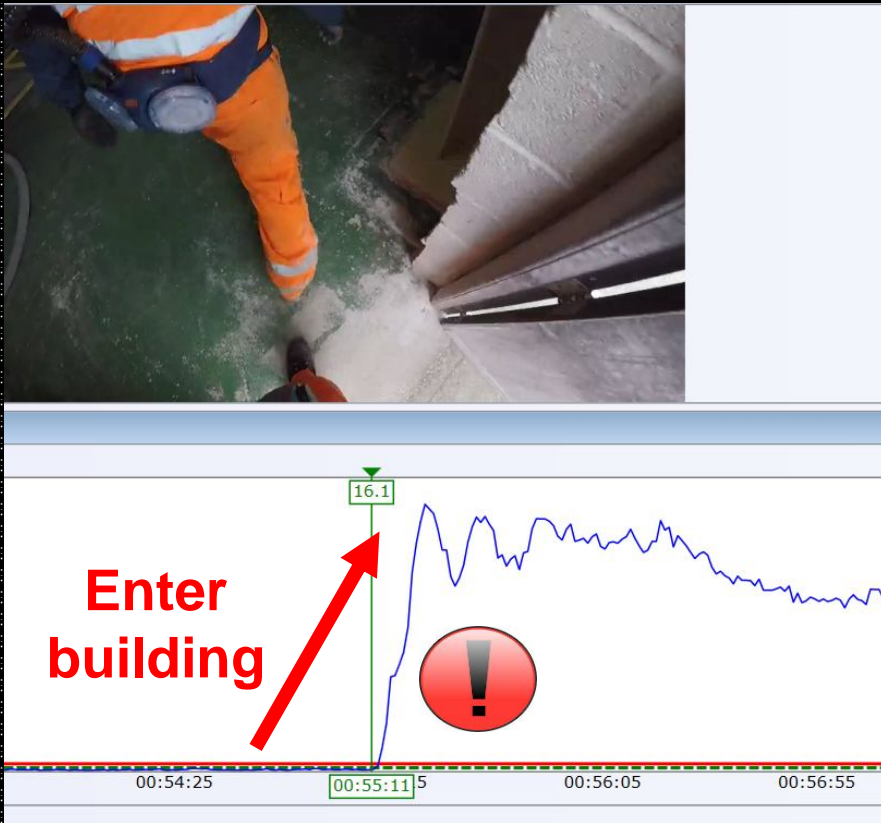


Control Rooms: HEPA Air Filtration

safe habits *save lives*



Breakdowns



safe habits save lives



Why Real Time Fixed Detector?



✓ Worker Health



✓ Production efficiency



✓ Equipment lifespan



safe habits save lives



How it works?

✓ Alerts when abnormal levels are detected



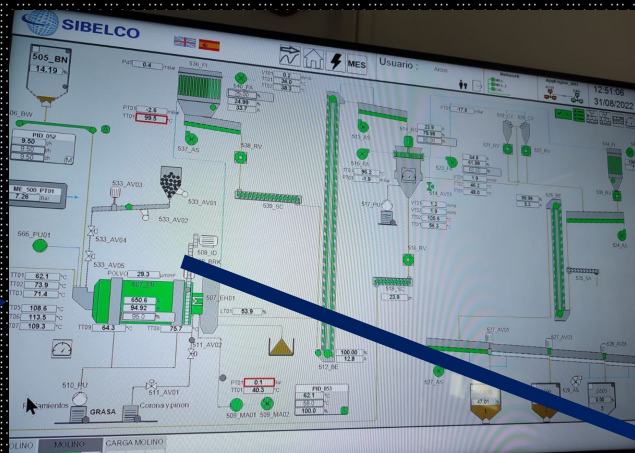
✓ and this protects employees and process



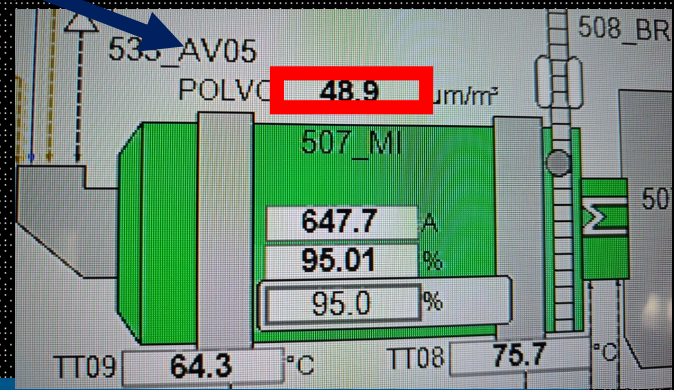
safe habits *save lives*



Dust detection in Scada (visual alarms in control rooms)



The operator can see what the dust levels are in the different points of the plant



safe habits *save lives*



Investigations

Dust peaks every time the operator takes a sample

Improvement opportunity:
Automatic sampling



safe habits *save lives*



Real example Sibelco: Netherlands (Maastricht)

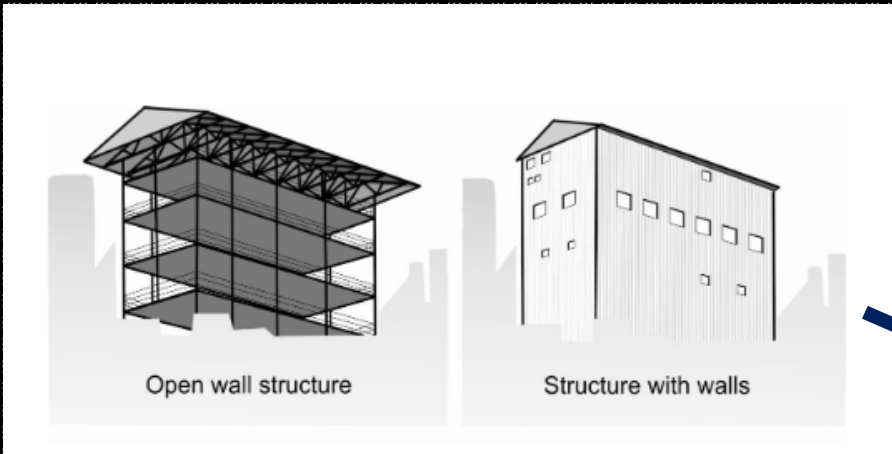
Dust detector are connected with visual indicators and exhaust fans



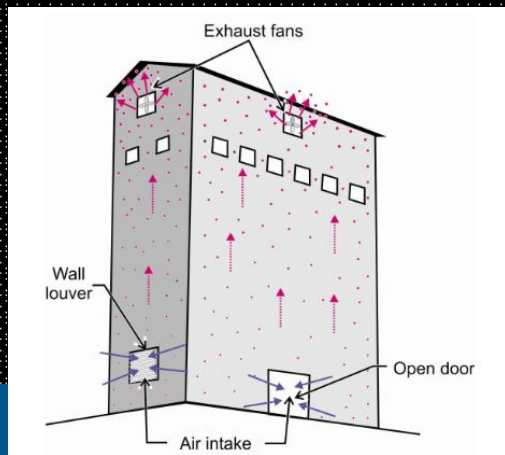
safe habits *save lives*



How many detectors are needed?



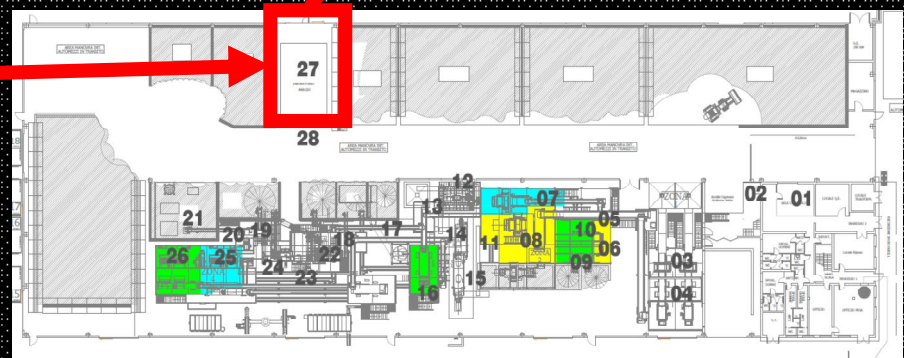
In close buildings dust in spread through all floors, less detectors are needed



safe habits *save lives*



Installation of more detectors to identify faster where the dust leak has occurred



safe habits *save lives*



GET TO ZERO

Engagement • Continuous Improvement • Critical Controls

THANK YOU

Any questions?

